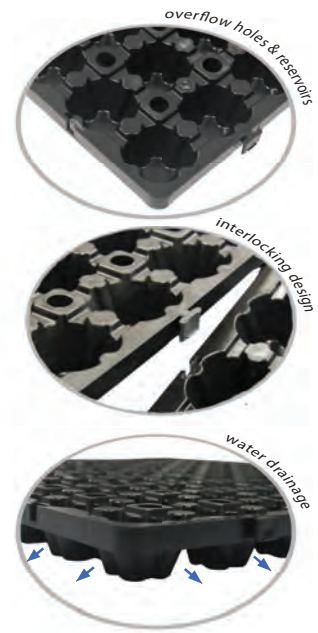
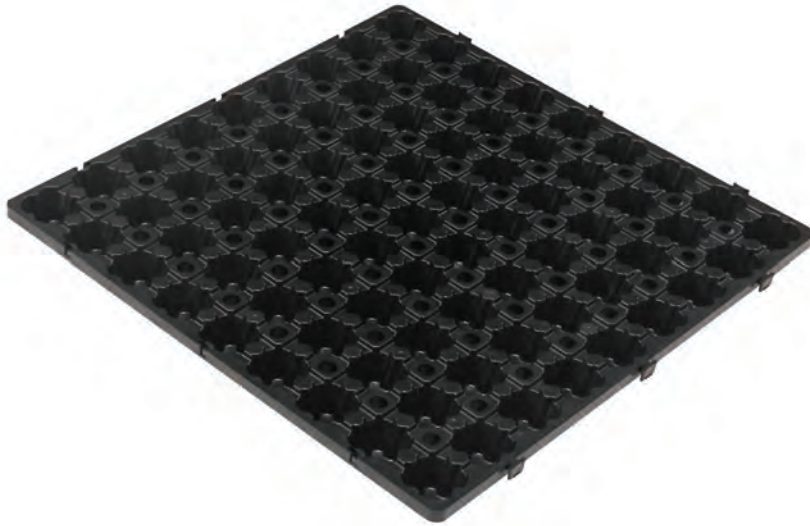


PlanterCell® 30

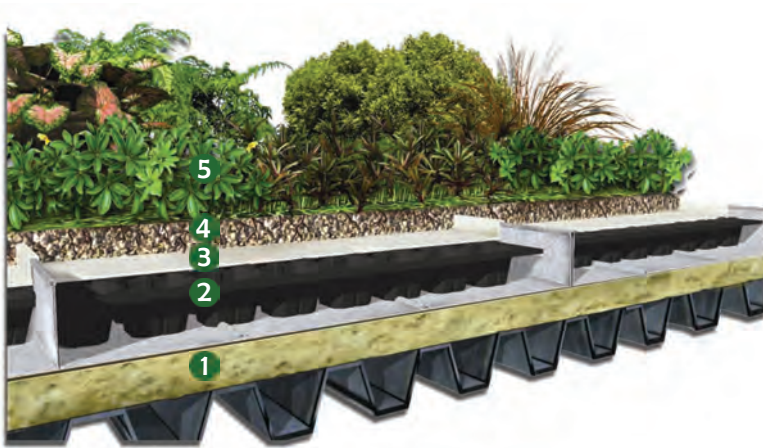


PlanterCell® 30 is a lightweight and high strength water retention and drainage tray that can be applied both as a green roof system or a sub-soil drainage system. The sturdiness of the tray supports the weight of the water stored in its cells, planting mix, plants and human traffic.

The tray, manufactured from recycled polypropylene raw material using injection moulding process, has 81 cells, acting as reservoirs with water storage capacity of approx. 8.80 l/m² to keep plants nourished via capillary action, reducing irrigation frequency needed when applied as a green roof system. The holes on the ridge between the rows of cells, serves to discharge water when applied as a sub-soil drainage system.

The tray interlocks together to form a sturdy platform for planting or for drainage purpose.

The system consist of the tray, PlanterCell® Planting Mix and Insu® Felt as a separation layer between the planting media and the cells to prevent clogging of the reservoirs.



Technical Specifications		UOM	PlanterCell® 30
SEC Green Label			Yes
SGBC Green Product			✓✓✓✓
Material			Recycled PP
Colour			Black
Size:	Height	mm	30
	Width	mm	500
	Length	mm	500
Pieces per m ² Area		pc	4
Nominal Weight:	Planted	kg/m ²	120 to 135
Cells (Reservoirs)		nos.	9 x 9
Water Storage	Capacity	l/m ²	8.80
Compressive Strength		tonnes _f /m ²	120.8
Planting			Intensive Extensive

SEC = Singapore Environment Council
SGBC = Singapore Green Building Council

- (1) Metal Roof System
- (2) PlanterCell® 30
- (3) Insu® Felt
- (4) PlanterCell® Planting Mix
- (5) Selected Green Roof plants

Fire resistant version available. Please contact us for more information.